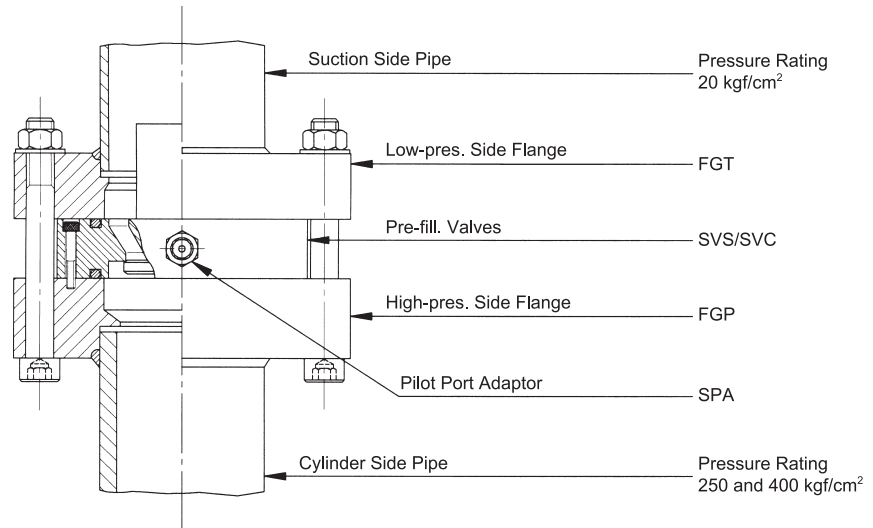
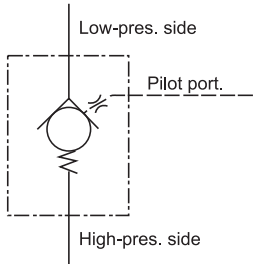
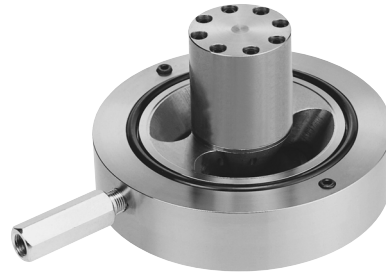
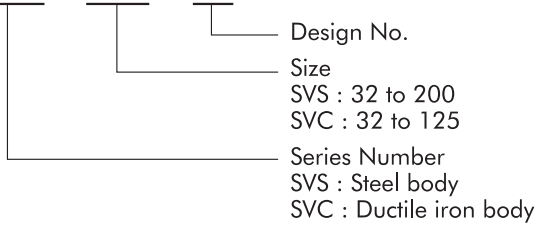




Flang-clamped type, Pre-fill Valves

■ HOW TO ORDER

SVS - 100 - 10



■ SPECIFICATIONS

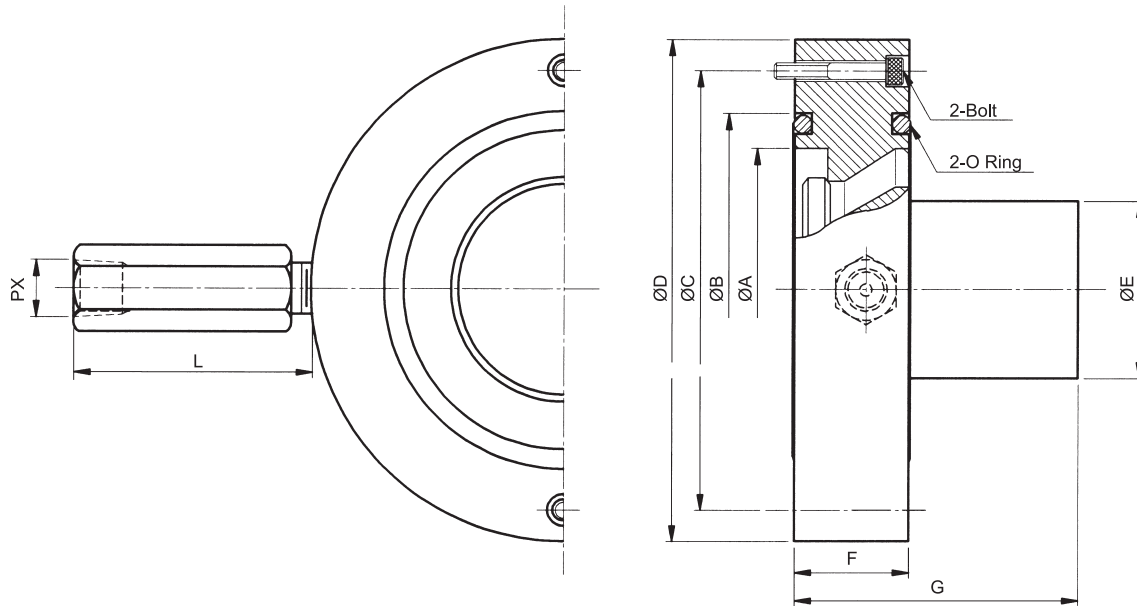
Model No.	Flow Q _{max} l/min	Pres.P _{max} kgf/cm ²	Pilot ratio P _{control} /P _{cyl.}	Flange bolts		Pipe size	Weight kgs
				Number	Nor. diameter		
SVS-32-10	160	400	3.6	4	M16	2B	1.3
SVS-50-10	400		3.8	6	M16.M24*	3B	2.9
SVS-63-10	630		4.2	8	M16.M24*	3.5B/4B	4.5
SVS-80-10	1000		4.3	8	M16.M24*	4B	6.2
SVS-100-10	1600		4.3	8	M22.M30*	5B	12.3
SVS-125-10	2500		4.3	12	M24.M30*	8B	23.0
SVS-160-10	4000	250	4.2	16	M30	10B	50.0
SVS-200-10	7000		4.1	20	M30	12B	85.0

Note : For working pressure up to 400kgf/cm²

SVC-32-10	160	250	3.6	4	M16	2B	1.3
SVC-50-10	400		3.8	6	M16	3B	2.9
SVC-63-10	630		4.2	8	M16	3.5B/4B	4.5
SVC-80-10	1000		4.3	8	M16	4B	6.2
SVC-100-10	1600		4.3	8	M22	5B	12.3
SVC-125-10	2500		4.3	12	M24	8B	23.0



Flang-clamped type, Pre-fill Valves



DIMENSIONS

Model No.	ØA	ØB	ØC	ØD	ØE	ØF	ØG	L	PX	Fixed Bolt	O-Ring
SVS- 32 SVC- 32	48	63	—	82	32	28	55	62	PT1/4"	—	1517-6
SVS- 50 SVC- 50	72	90	112	128	45	29	72			M 4 x 30	G85
SVS- 63 SVC- 63	87	105	125	143	50	33.53	84			M 5 x 35	P95
SVS- 80 SVC- 80	108	130.5	150	169	57	8.5	100			M 5 x 40	P120
SVS-100 SVC-100	130	155	185	210	70	44	122			M 6 x 45	P145
SVS-125 SVC-125	170	200	226	248	89	51	155			M 6 x 60	P185
SVS-160	218	250	284	310	120	70	233	70	PT3/8"	M 8 x 70	P235
SVS-200	272	310	355	390	145	95	268	85	PT1/2"	M10 x 95	P295

PRE-FILL VALVES PILOT PORT ADAPTOR

Model No.	Fixed Bolt	O-Ring
SVS(SVC)- 32, 50	ø0.7mm	PT1/8"
SVS(SVC)- 63	ø0.8mm	
SVS(SVC)- 80	ø1.0mm	
SVS(SVC)-100	ø1.2mm	
SVS(SVC)-125, 160	ø1.5mm	
SVS(SVC)-200	ø1.8mm	PT1/4"

